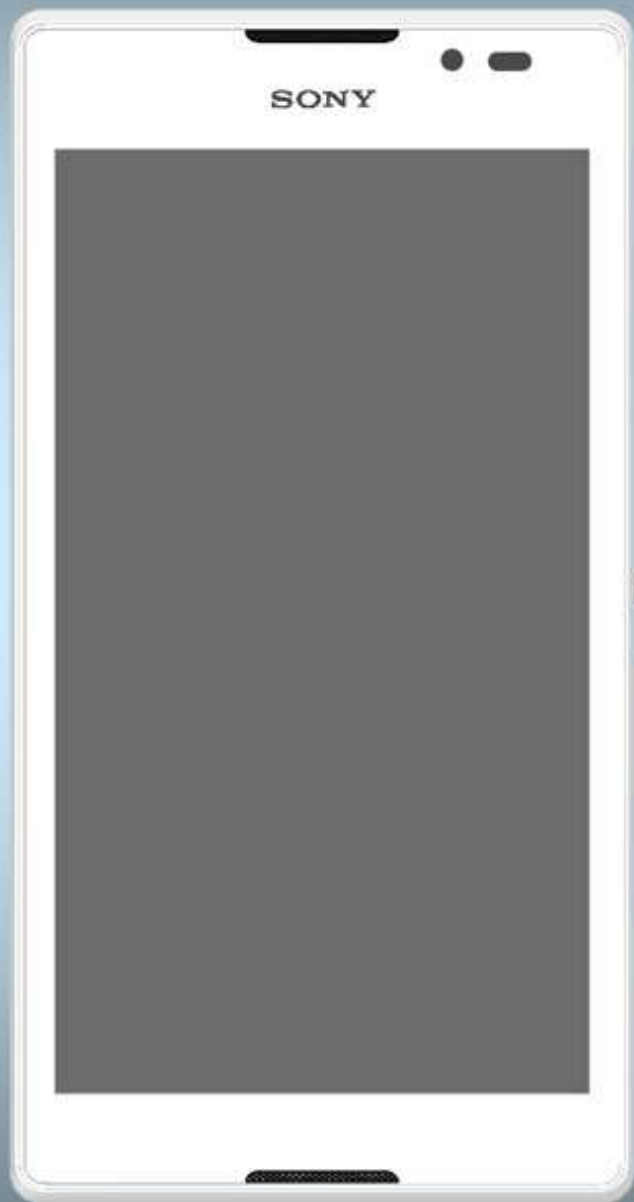


Troubleshooting Guide

- mechanical -



C2304, C2305, S39h

CONTENTS

1	Problem Areas	4
1.1	Power	4
1.1.1	Will not power on or will switch off randomly.....	4
1.2	Keys	6
1.2.1	Back/Home/Multi task Keys	6
1.2.2	Volume Key	6
1.2.3	On/Off Key	7
1.2.4	Camera Key.....	8
1.3	Touch Screen	10
1.3.1	Touch Screen malfunction.....	10
1.4	Display	11
1.4.1	Graphics & Illumination	11
1.5	LED/Illumination	12
1.5.1	LED/Illumination	12
1.6	Speaker	14
1.6.1	Speaker.....	14
1.7	Earphone	17
1.7.1	Earphone	17
1.8	Microphone.....	18
1.8.1	Main Microphone	18
1.9	Vibrator	19
1.9.1	Vibrator not generating alerts	19
1.10	Camera.....	20
1.10.1	Camera defects.....	20
1.10.2	Secondary Camera	21
1.11	Flash LED	22
1.11.1	Flash LED not flashing.....	22
1.12	Bluetooth and WLAN	24
1.12.1	Bluetooth or WLAN connection failure.....	24
1.13	GPS	25
1.13.1	GPS malfunctions.....	25
1.14	Compass.....	26
1.14.1	Compass fails	26
1.15	Accelerometer	27
1.15.1	Accelerometer test fails	27
1.16	Ambient Light Sensor	28
1.16.1	Ambient Light Sensor	28
1.17	Proximity Switch	29
1.17.1	Proximity Switch.....	29
1.18	Real Time Clock	30
1.18.1	Real Time Clock test fails	30
1.19	Total call time	31

1.19.1	Total call time fails	31
1.20	External Memory	32
1.20.1	Memory Card not detected	32
1.21	Security.....	33
1.21.1	Security fails	33
1.22	FM Radio.....	34
1.22.1	No/Poor FM Radio reception	34
1.23	Battery Test	35
1.23.1	Battery Test Fails.....	35
1.24	Verify Certificates.....	36
1.24.1	Verify certificates fails.....	36
1.25	Network & Signal.....	37
1.25.1	No/Poor signal	37
1.26	SIM	39
1.26.1	SIM not detected.....	39
1.26.2	Incorrect SIM indicated	41
1.27	Charging	42
1.27.1	Battery will not charge	42
1.28	HandsFree by Wire.....	43
1.28.1	Connection to Portable HandsFree fails.....	43
1.29	Data Communication	44
1.29.1	Data transfer via System Connector fails.....	44
2	Revision History	45

- You shall always after verifying the problem, start the trouble shooting with the Emma Service “Refurbish”.
- Software release information about improvements are found: www.sonymobile.com/Update

Note: In C2305/S39h product, whenever replacing Front Cover LCM TP Assy or Board swap after repair, it is mandatory to Calibrate the Proximity sensor/Light sensor (1277-0611) Trouble Shooting Application – mechanical).

1 Problem Areas

1.1 Power

1.1.1 Will not power on or will switch off randomly

Check:

Check whether the phone vibrates by pressing the on/off key.

Action:

1. If activation of the vibrator is detected, refer to section 1.4 'Display'.
2. Connect Wall Charger to charge the Embedded battery 30 min at least and check again.

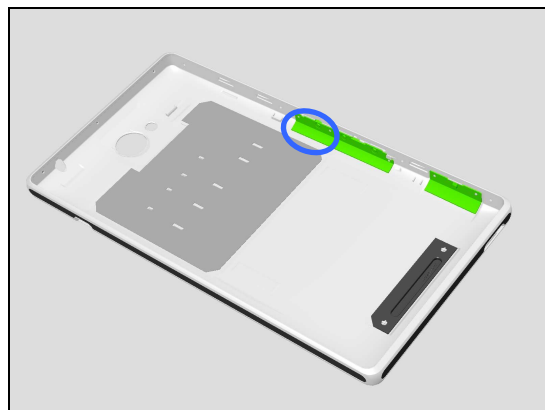


Check:

Inspect the on/off key.

Action:

1. Refer to section 1.2.3 'Key On/Off'.

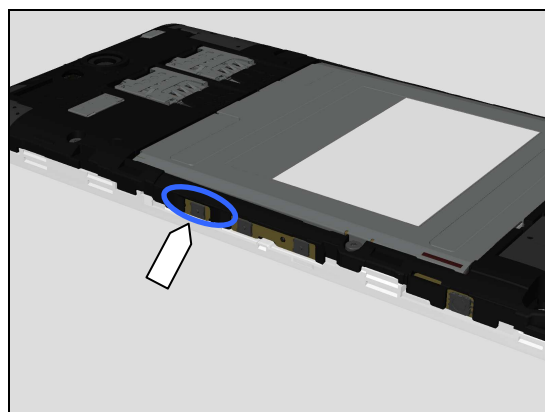


Check:

Inspect the On/Off key dome on Link FPC.

Action:

1. If dirty or oxidized – clean the dome.

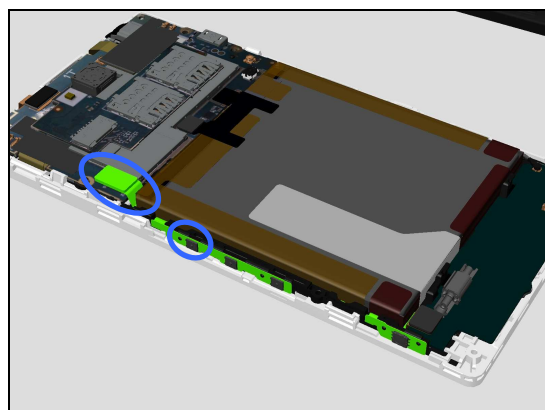


Check:

Inspect the Link FPC BtB connection on Main PBA.

Action:

1. If not properly connected – disconnect and reconnect connectors.



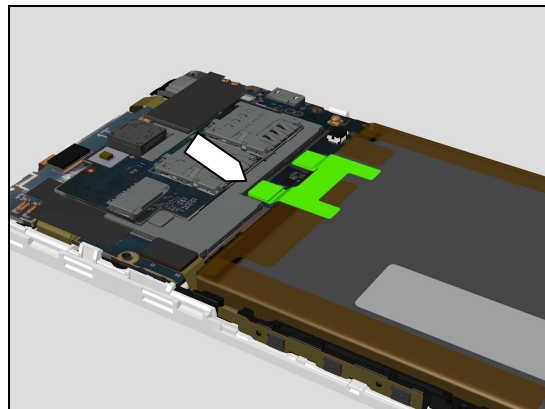
Problem Areas

Check:

Inspect the Battery 2330.0 mAh BtB connector on Main PBA.

Action:

1. Remove and reconnect Battery 2330.0 mAh BtB connector, test charging and then test powering on the unit.
2. If not properly connected – disconnect and reconnect connectors.
3. If dirty or oxidized – clean connectors.

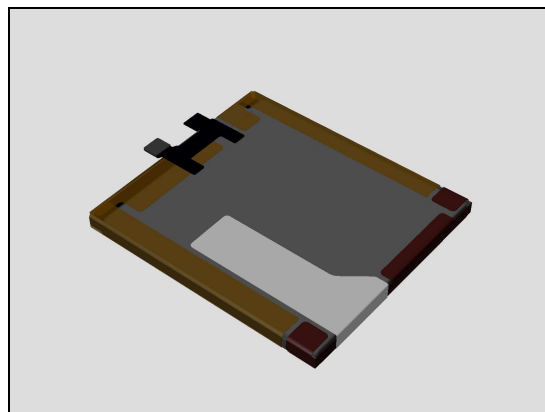


Check:

Inspect the Battery 2330.0 mAh.

Action:

1. If damaged, replace the Battery 2330.0 mAh.



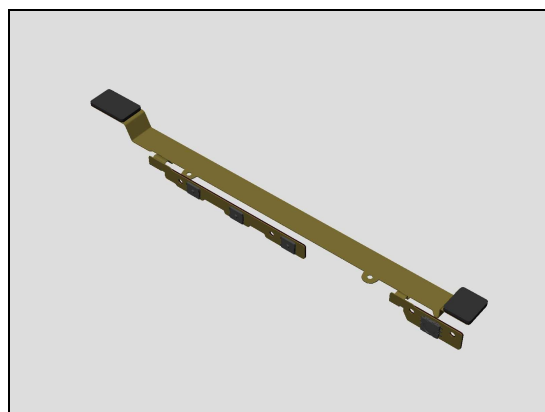
Check:

Inspect the Link FPC.

Action:

1. If damaged, replace the Link FPC.
2. Replace Main PBA

Note: Calibrate the P-sensor/L-sensor 1277-0611
Trouble Shooting Application – mechanical whenever replacing
Front Cover LCM TP Assy or Main Board swap.



Problem Areas

1.2 Keys

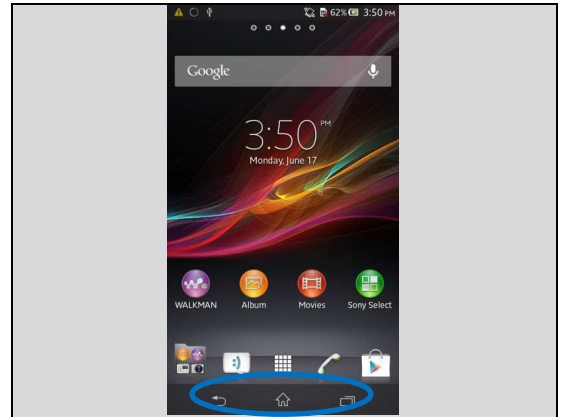
1.2.1 Back/Home/Multi task Keys

Check:

Inspect the Back /Home/Menu keys on Display.

Action:

1. Refer to the section 1.3 'Touch Screen'.
2. Replace Main PBA.



1.2.2 Volume Key

Check:

Inspect the external area of the volume key.

Action:

1. If dirty – clean it.

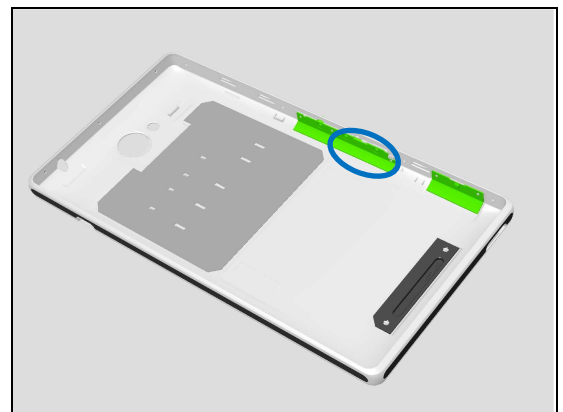


Check:

Inspect the volume key switch on Battery Cover Assy.

Action:

1. If damaged, replace the Battery Cover Assy.

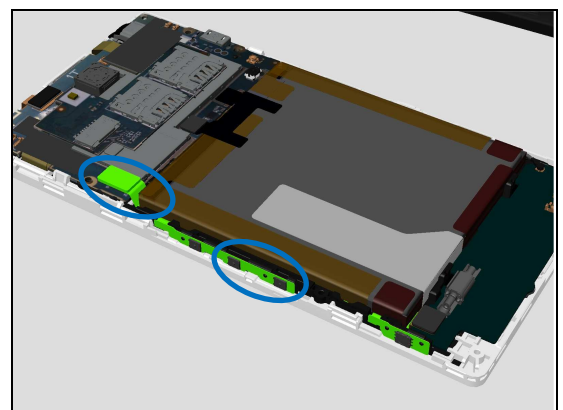


Check:

Inspect the volume key Dome on Link FPC and its BtB connector.

Action:

1. If dirty – clean it.



Problem Areas

2. If damaged, replace the Link FPC.
3. Replace Main PBA.

1.2.3 On/Off Key

Check:

Inspect the external area of the on/off key.

Action:

If dirty – clean it.

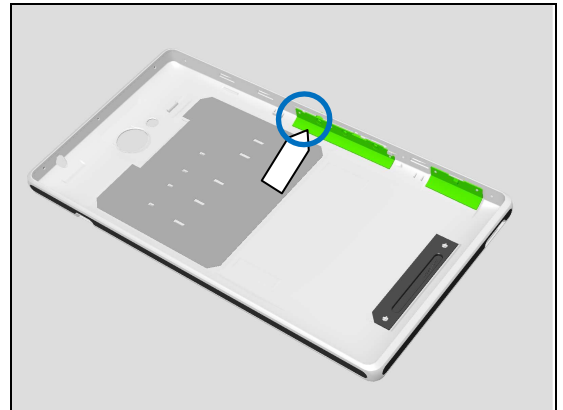


Check:

Inspect the on/off key on Battery Cover Assy.

Action:

1. If damaged, replace the Battery Cover Assy.

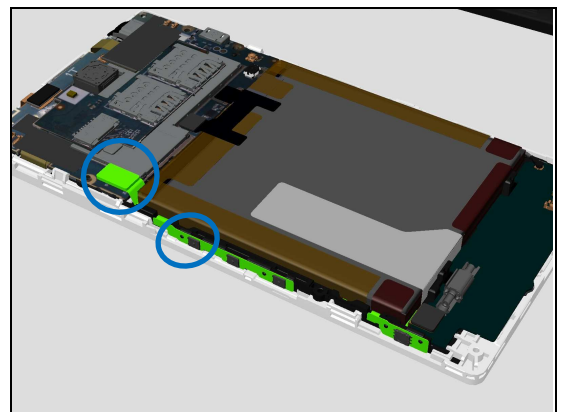


Check:

Inspect the on/off key dome on Link FPC and its BtB connector.

Action:

1. If dirty or oxidized – clean it.



Problem Areas

2. If damaged, replace the Link FPC.
3. Replace the Main PBA.

1.2.4 Camera Key

Check:

Inspect the external area of the Camera key.

Action:

If dirty – clean it.

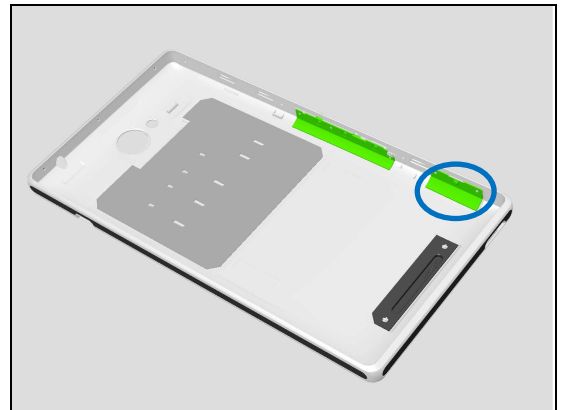


Check:

Inspect the Camera key switch on Battery Cover Assy.

Action:

1. If damaged, replace the Battery Cover Assy.

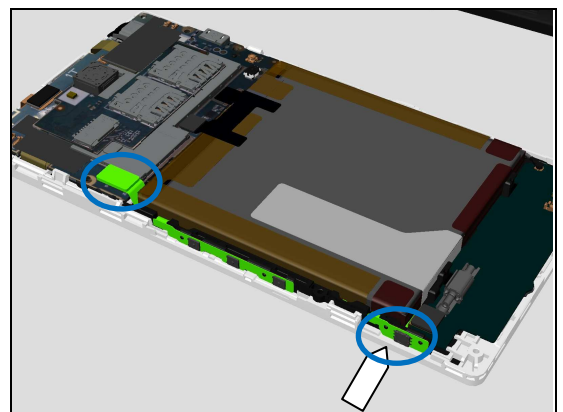


Check:

Inspect the Camera key dome and its BtB connector on Link FPC.

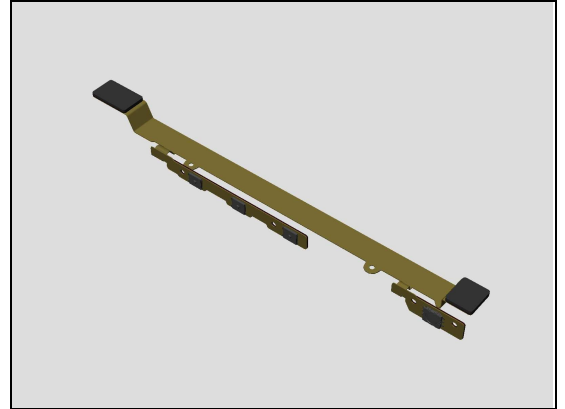
Action:

1. If dirty or oxidized – clean it.



Problem Areas

2. If damaged, replace the Link FPC.
3. Replace the Main PBA.



Problem Areas

1.3 Touch Screen

1.3.1 Touch Screen malfunction

Check:

Inspect the touch screen on the Front Cover LCM TP Assy

Action:

If dirty – clean it.

If: The end user has complained about unexpected behavior of the touch screen or the touch keys.

Action:

Update SW and check again.

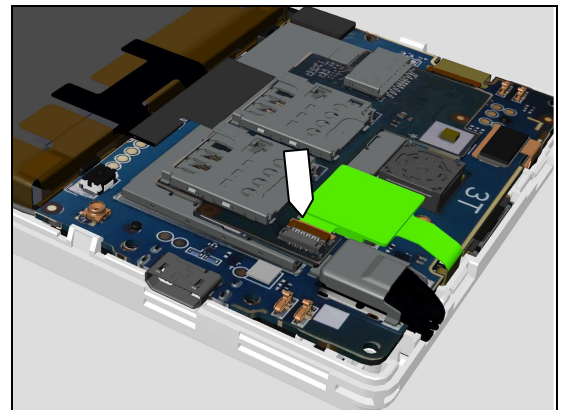


Check:

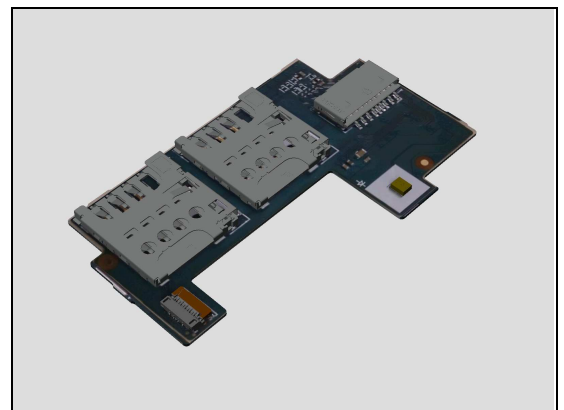
Inspect the ZIF connector on SIM Board Assy.

Action:

1. If not properly connected – disconnect and reconnect.
2. If dirty or oxidized – clean it.



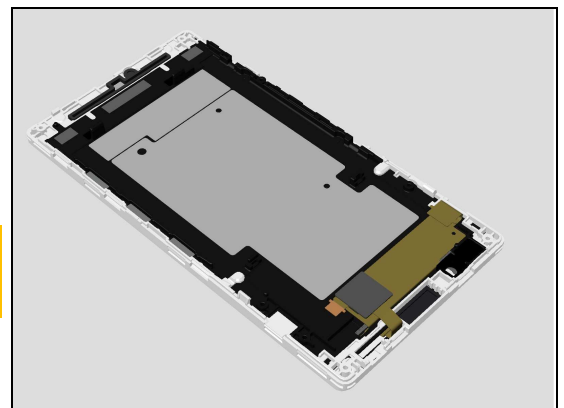
3. If the SIM Board Assy is damaged, replace the SIM Board Assy.



3. If the Touch Panel is damaged, replace the Front Cover LCM TP Assy.

4. Replace Main PBA.

Note: Calibrate the P-sensor/L-sensor 1277-0611
Trouble Shooting Application – mechanical whenever replacing
Front Cover LCM TP Assy or Main Board swap.



Problem Areas

1.4 Display

1.4.1 Graphics & Illumination

Check:

Check whether the phone vibrates after the on/off key has been pressed.

Action:

1. If the activation described above is not detected, refer to section 1.1 'Power'.

2. Press HW reset Key and check it again.

Check:

Inspect the ZIF connector of the LCM to the main PBA.

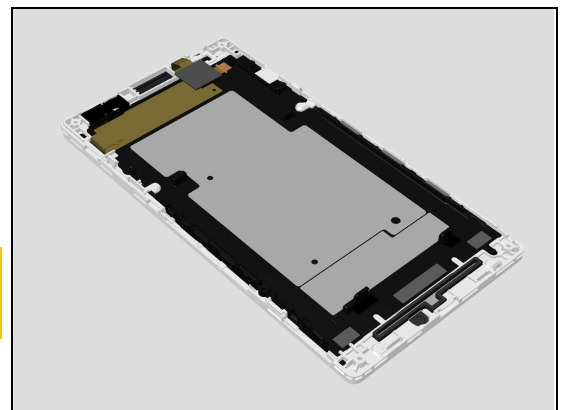
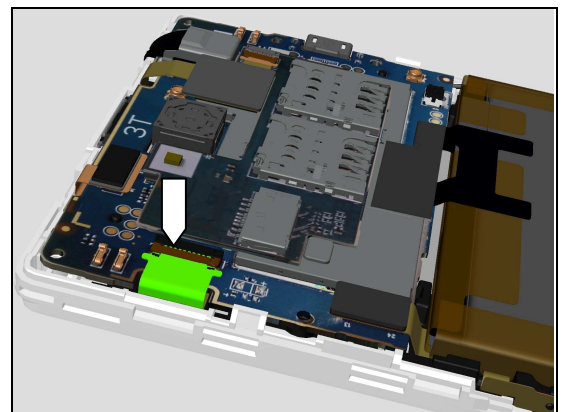
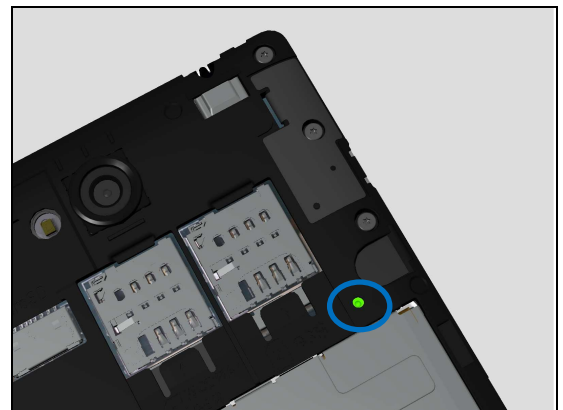
Action:

1. If not properly connected – disconnect and reconnect.
2. If dirty or oxidized – clean it.

3. If the display or the LCM FPC is damaged – replace the Front Cover LCM TP Assy

4. Replace Main PBA.

Note: Calibrate the P-sensor/L-sensor 1277-0611
Trouble Shooting Application – mechanical whenever replacing Front Cover LCM TP Assy or Main Board swap.



Problem Areas

1.5 LED/Illumination

1.5.1 LED/Illumination

Check:

Inspect the external window area of the LED on the Front Cover LCM TP Assy

Action:

1. If dirty – clean it.

2. If the external window area is damaged – replace the Front Cover LCM TP Assy.

Note: Calibrate the P-sensor/L-sensor 1277-0611
Trouble Shooting Application – mechanical whenever replacing Front Cover LCM TP Assy or Main Board swap.

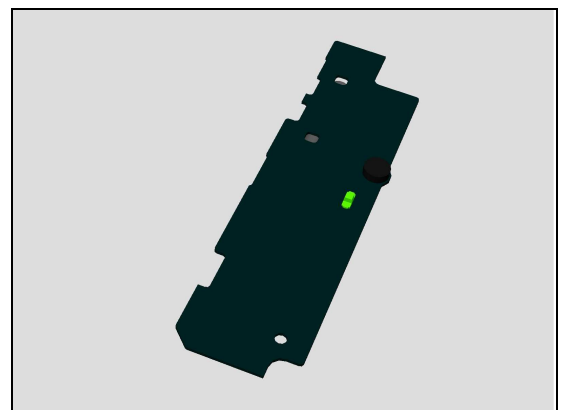
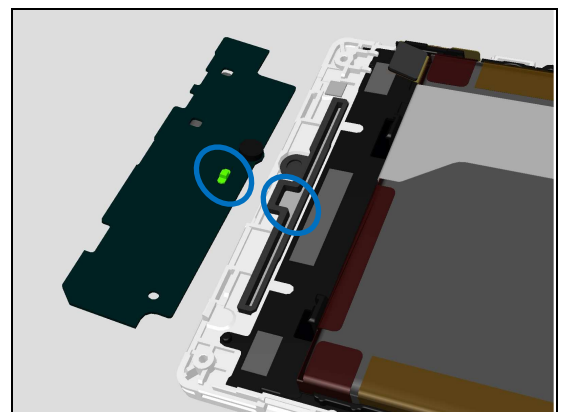
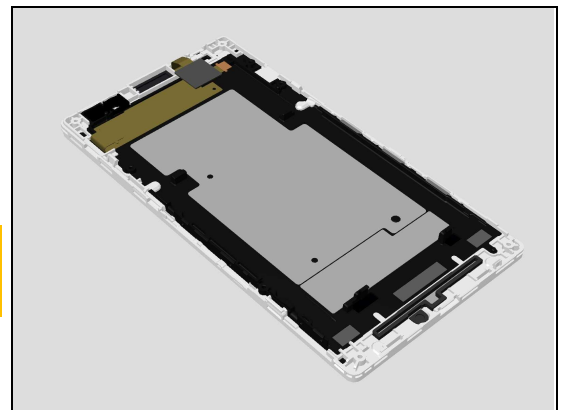
Check:

Inspect the LED on the Sub Board Assy and the Front Cover LCM TP Assy

Action:

1. If dirty or clogged – clean them.

2. If the Sub Board Assy is damaged – replace it.



Problem Areas

Check:

Inspect the BtB connectors of Link FPC on both Sub Board Assy and Main PBA.

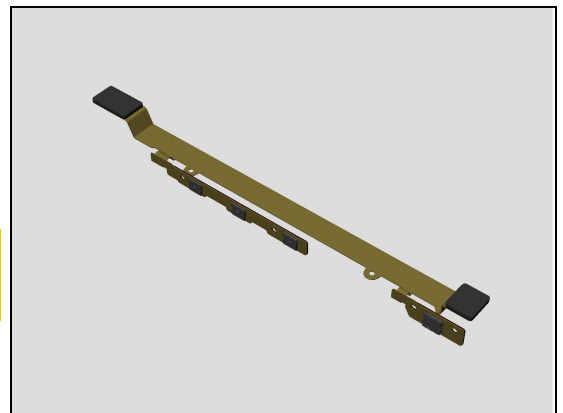
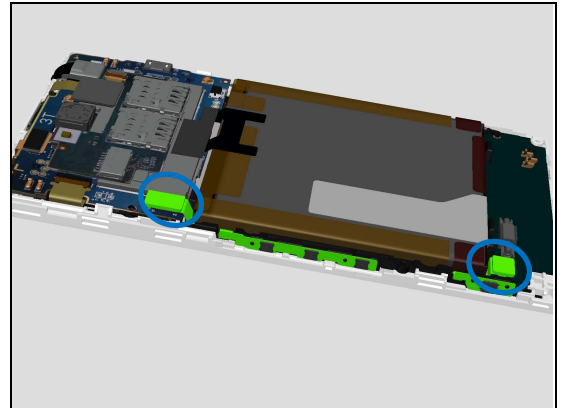
Action:

1. If not properly connected – disconnect and reconnect.
2. If dirty or oxidized – clean it.

3. If the Link FPC is defective, replace it.

4. Replace Main PBA.

Note: Calibrate the P-sensor/L-sensor 1277-0611
Trouble Shooting Application – mechanical whenever replacing
Front Cover LCM TP Assy or Main Board swap.



Problem Areas

1.6 Speaker

1.6.1 Speaker

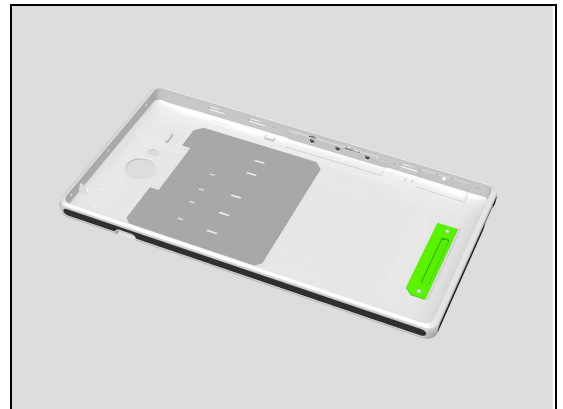
Check:

Inspect the Loudspeaker's external port on the Battery Cover Assy.

Action:

1. If the Loudspeaker external port is clogged – clean it.

2. If the Loudspeaker external port is damaged – replace the Battery Cover Assy.

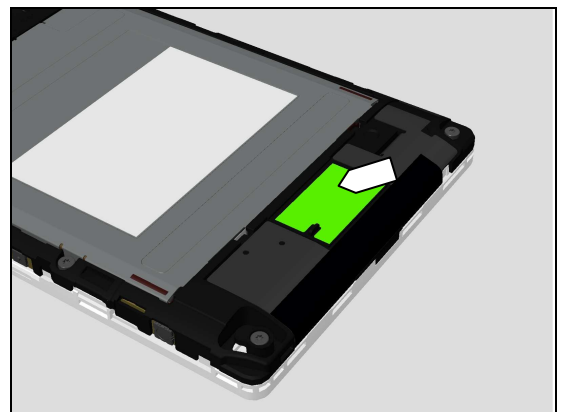


Check:

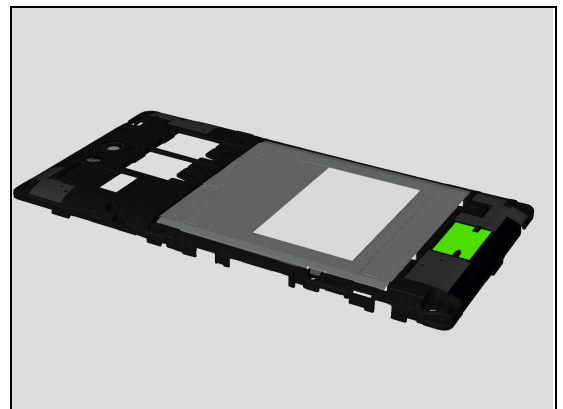
Inspect the mesh of the Loudspeaker on the Rear Cover Assy.

Action:

1. If dirty – clean it.



2. If the mesh is damaged – replace the Rear Cover Assy.



Problem Areas

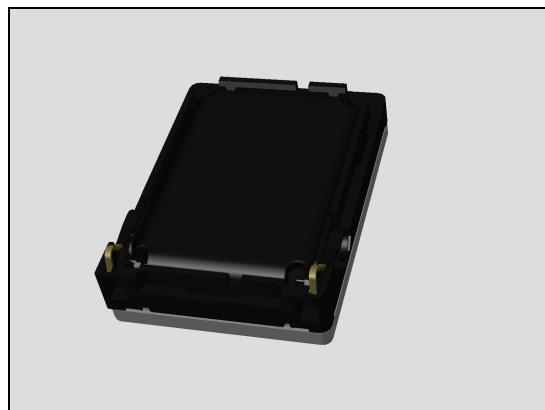
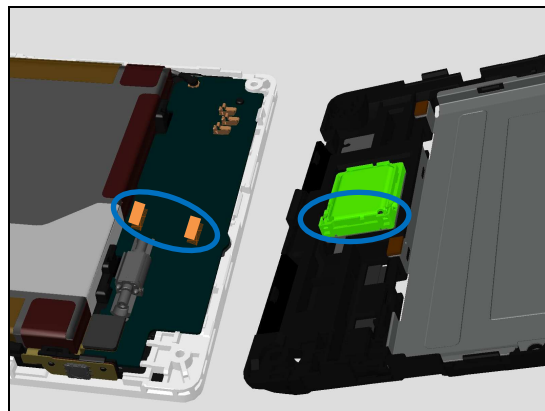
Check:

Inspect the Loudspeaker's pins and the pads on the Sub Board Assy.

Action:

1. If dirty – clean them.

2. If the pins of the Loudspeaker are damaged – replace the Loudspeaker.

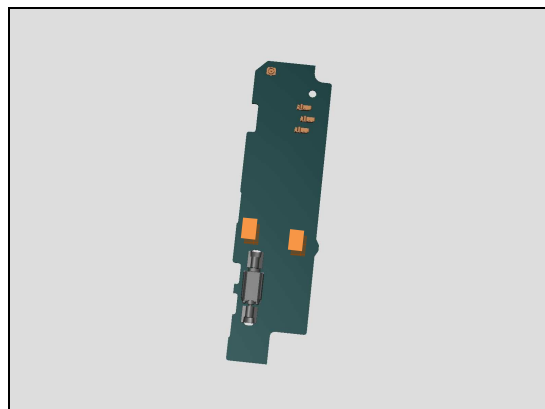
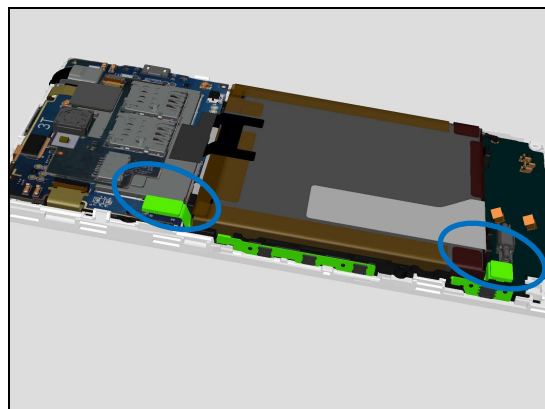


Check:

Inspect the BtB connectors of Link FPC on both Sub Board Assy and Main PBA.

Action:

1. If not properly connected – disconnect and reconnect.
2. If dirty or oxidized – clean it.



3. If the pads or the BtB connector of the Sub Board Assy is damaged – replace the Sub Board Assy.

Problem Areas

3. If the Link FPC is defective, replace the it.
4. Replace Main PBA.

Note: Calibrate the P-sensor/L-sensor 1277-0611
Trouble Shooting Application – mechanical whenever replacing
Front Cover LCM TP Assy or Main Board swap.



Problem Areas

1.7 Earphone

1.7.1 Earphone

Check:

Inspect the Receiver's external port on the Front Cover LCM TP Assy

Action:

1. If clogged – clean it.

2. If the port is damaged – replace the Front Cover LCM TP Assy.

Note: Calibrate the P-sensor/L-sensor 1277-0611
Trouble Shooting Application – mechanical whenever replacing
Front Cover LCM TP Assy or Main Board swap.

Check:

Inspect the Receiver's pins and the contact pads on the main PBA.

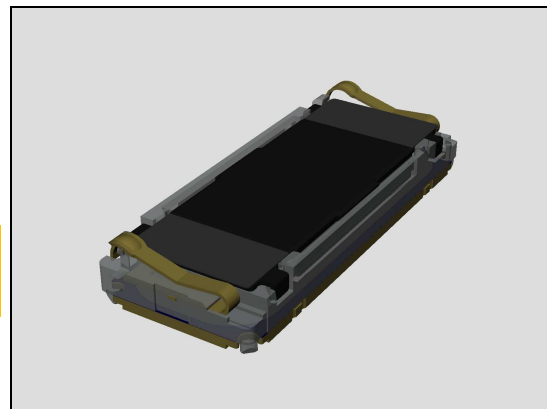
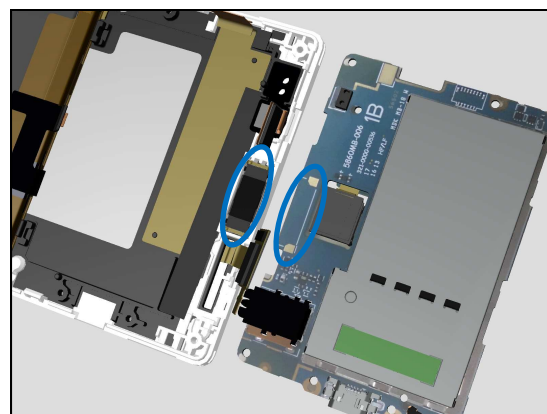
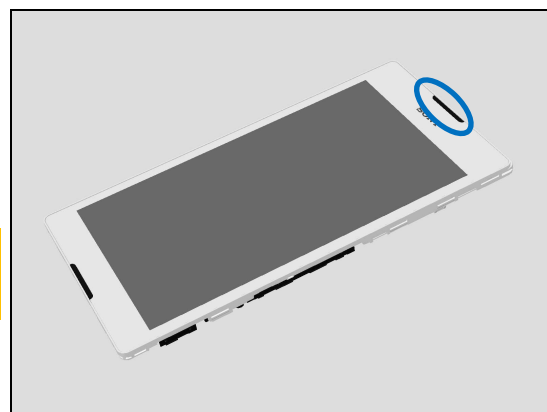
Action:

1. If dirty or oxidized – clean it.

2. If the pins of the Receiver are damaged – replace the Receiver.

3. Replace Main PBA.

Note: Calibrate the P-sensor/L-sensor 1277-0611
Trouble Shooting Application – mechanical whenever replacing
Front Cover LCM TP Assy or Main Board swap.



Problem Areas

1.8 Microphone

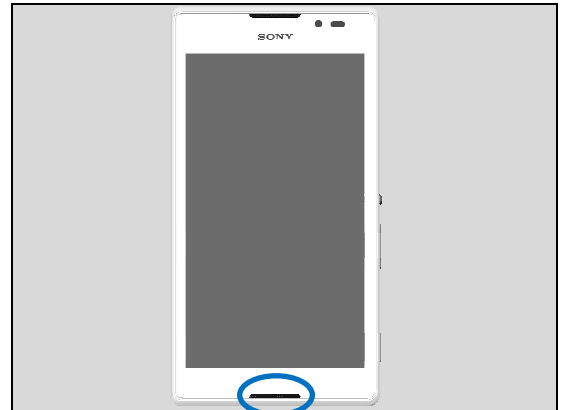
1.8.1 Main Microphone

Check:

Inspect the Microphone's external port on the Front Cover LCM TP Assy

Action:

If clogged or dirty– clean the port.



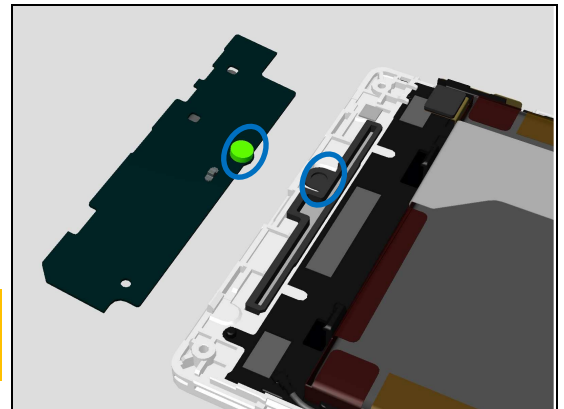
Check:

Inspect the microphone on the Sub Board Assy and the Mic mesh on the Front Cover LCM TP Assy

Action:

1. If the port is damaged – replace the Front Cover LCM TP Assy.
2. If Sub Board Assy is damaged, replace it.

Note: Calibrate the P-sensor/L-sensor 1277-0611
Trouble Shooting Application – mechanical whenever replacing Front Cover LCM TP Assy or Main Board swap.

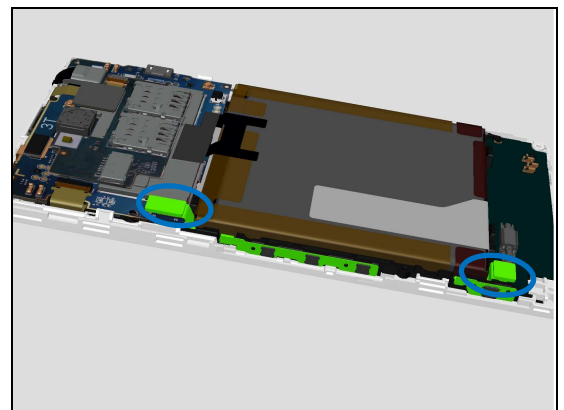


Check:

Inspect the BtB connectors of Link FPC on both Sub Board Assy and Main PBA.

Action:

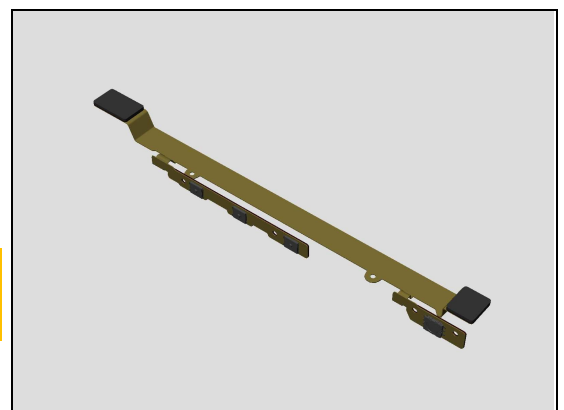
1. If not properly connected – disconnect and reconnect.
2. If dirty or oxidized – clean it.



3. If the Link FPC is defective, replace the Front Cover LCM TP Assy.

4. Replace Main PBA.

Note: Calibrate the P-sensor/L-sensor 1277-0611
Trouble Shooting Application – mechanical whenever replacing Front Cover LCM TP Assy or Main Board swap.



Problem Areas

1.9 Vibrator

1.9.1 Vibrator not generating alerts

Check:

Inspect the Vibrator soldered on the Sub Board Assy.

Action:

1. If dirty– clean it.

3. If the vibrator or the BtB connector on the Sub Board Assy is damaged – replace the Sub Board Assy.

Check:

Inspect the two BtB connectors on the Link FPC.

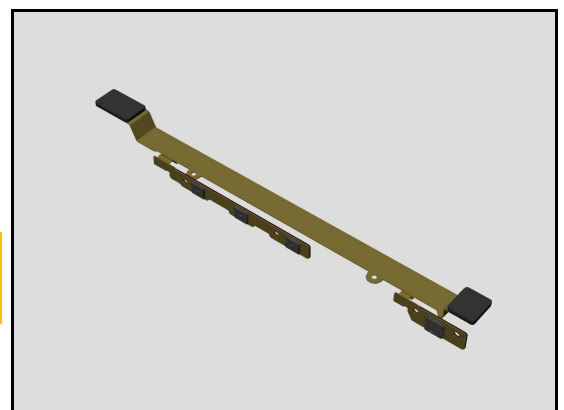
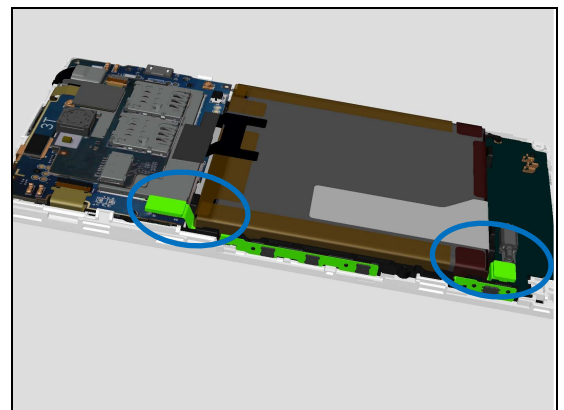
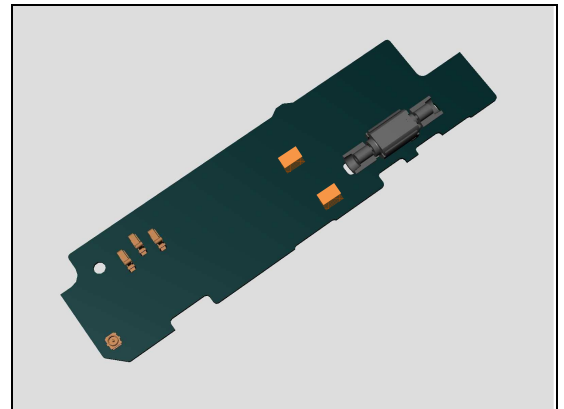
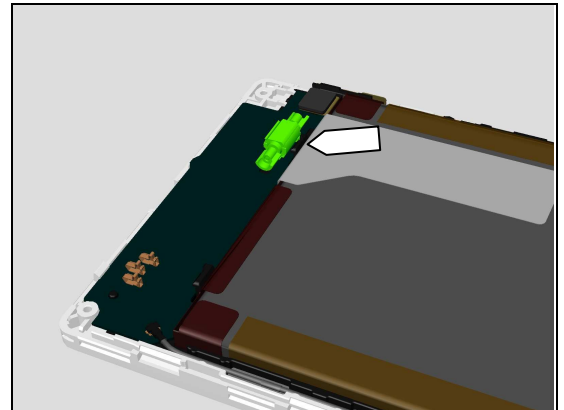
Action:

1. If dirty or oxidized – clean it.

2. If the Link FPC is defective, replace it.

3. Replace Main PBA.

Note: Calibrate the P-sensor/L-sensor 1277-0611
Trouble Shooting Application – mechanical whenever replacing
Front Cover LCM TP Assy or Main Board swap.



Problem Areas

1.10 Camera

1.10.1 Main Camera defects

Check:

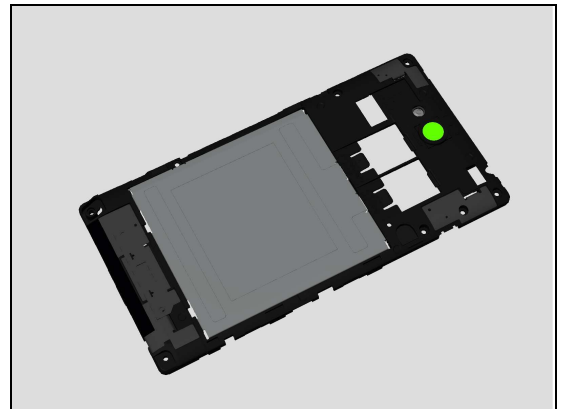
Inspect the external area of camera window.

Action:

1. If dirty – clean it.



2. If the camera window scratched or damaged – replace the Rear Cover Assy.

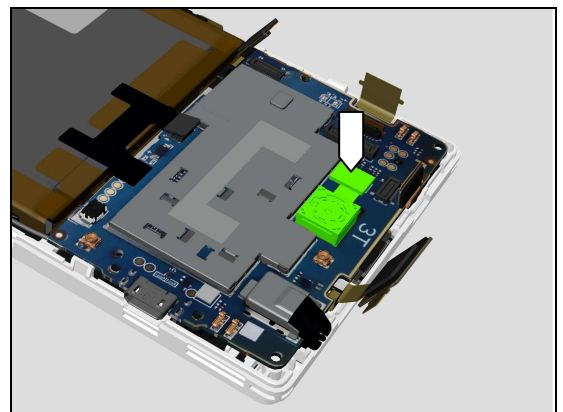


Check:

Inspect the BtB connector of the Main Camera to the main PBA.

Action:

1. If not properly connected – disconnect and reconnect.
2. If dirty or oxidized – clean it.

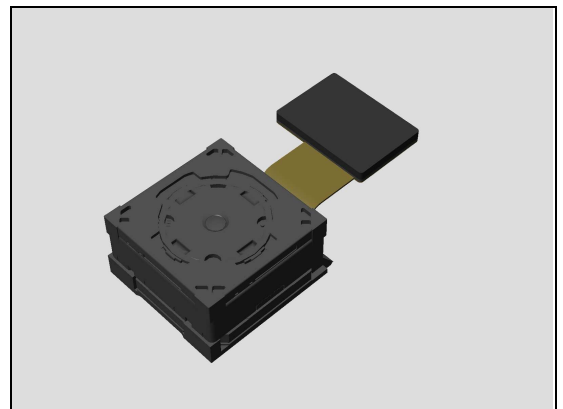


Check:

Inspect the Main Camera.

Action:

1. If the Main Camera is damaged – replace it.
2. Replace Main PBA.



Problem Areas

1.10.2 Video Camera

Check:9

Inspect the external area of the video camera window.

Action:

1. If dirty – clean it.

2. If the external window area is damaged – replace the Front Cover LCM TP Assy.

Note: Calibrate the P-sensor/L-sensor 1277-0611 Trouble Shooting Application – mechanical whenever replacing Front Cover LCM TP Assy or Main Board swap.

Check:

Inspect the video camera BtB connector on the main PBA.

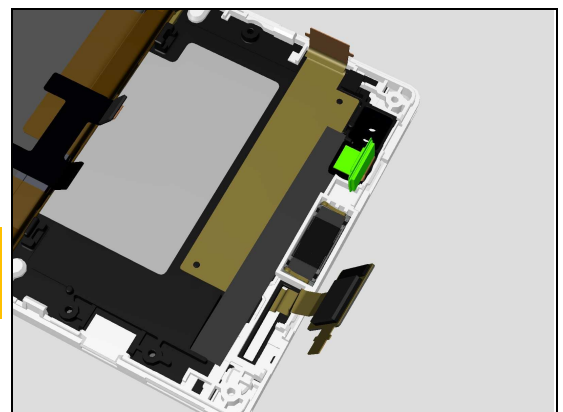
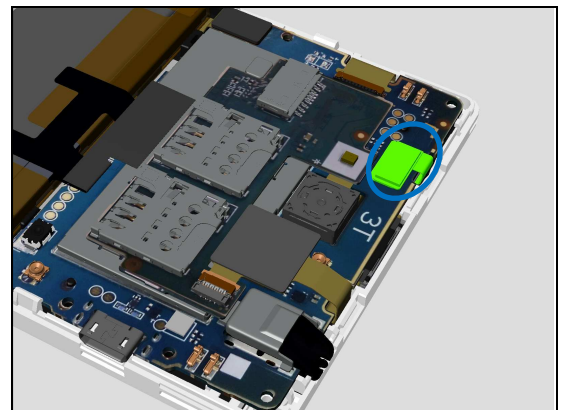
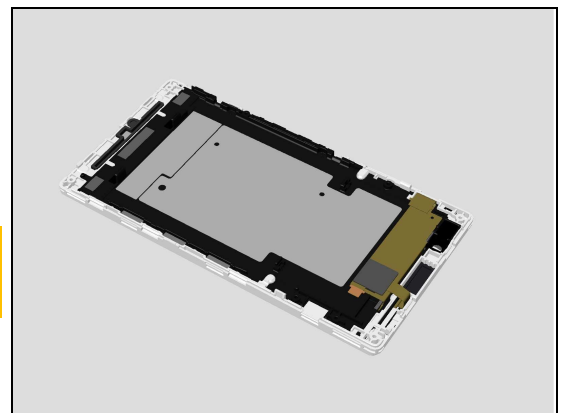
Action:

1. If dirty or clogged – clean them.

2. If the damaged – replace the Camera Module CMOS 0.3M.

3. Replace Main PBA.

Note: Calibrate the P-sensor/L-sensor 1277-0611 Trouble Shooting Application – mechanical whenever replacing Front Cover LCM TP Assy or Main Board swap.



Problem Areas

1.11 Flash LED

1.11.1 Flash LED not flashing

Check:

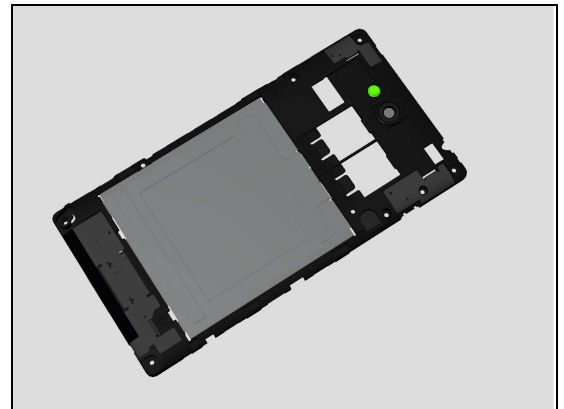
Inspect the external area of the flash LED window.

Action:

1. If the flash LED window is dirty – clean it.



2. If the flash LED window scratched or damaged – replace the Rear Cover Assy.

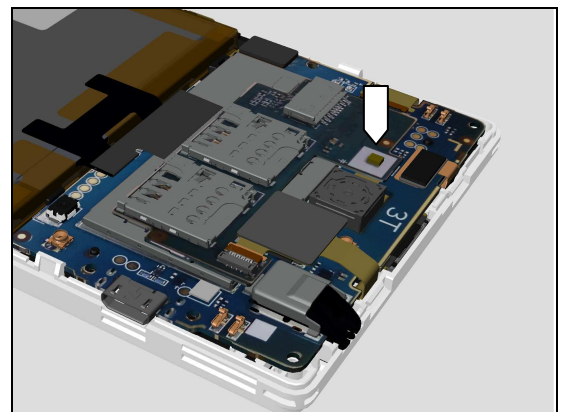


Check:

Inspect the flash LED on the SIM Board Assy.

Action:

1. If the flash LED is damaged, Replace the SIM Board Assy.

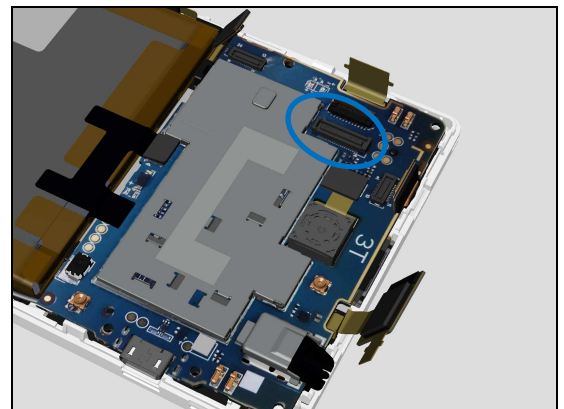


Check:

Inspect the SIM Board Assy BtB connection to Main PBA.

Action:

1. If not properly connected – disconnect and reconnect.
2. If dirty or oxidized – clean it.

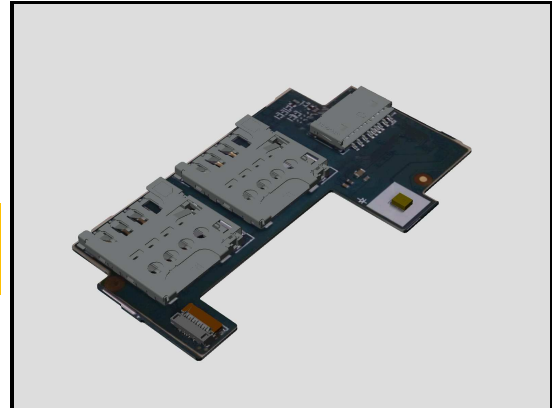


Problem Areas

3. If SIM Board Assy is damaged, replace it.

4. Replace the Main PBA.

Note: Calibrate the P-sensor/L-sensor 1277-0611
Trouble Shooting Application – mechanical whenever replacing
Front Cover LCM TP Assy or Main Board swap.



Problem Areas

1.12 Bluetooth and WLAN

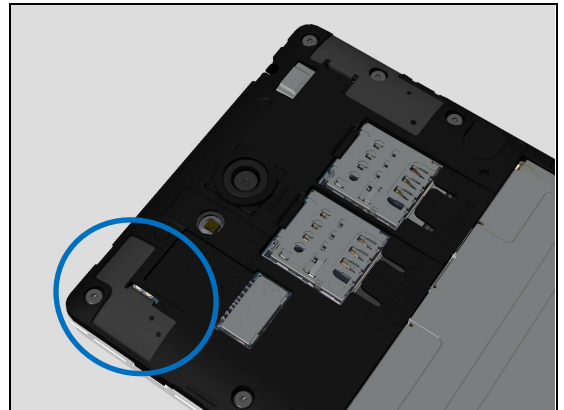
1.12.1 Bluetooth or WLAN connection failure

Check:

Inspect the Antenna BT WIFI on the Rear Cover Assy.

Action:

1. If dirty – clean it.

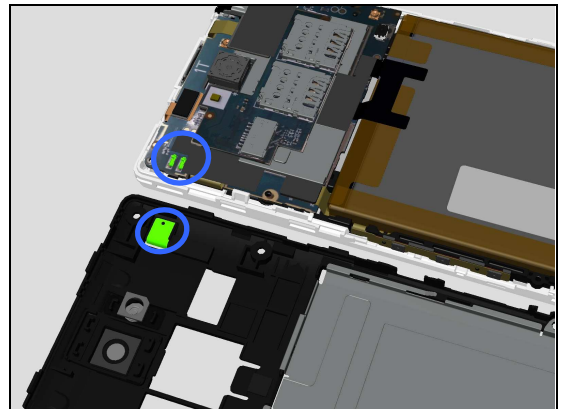


Check:

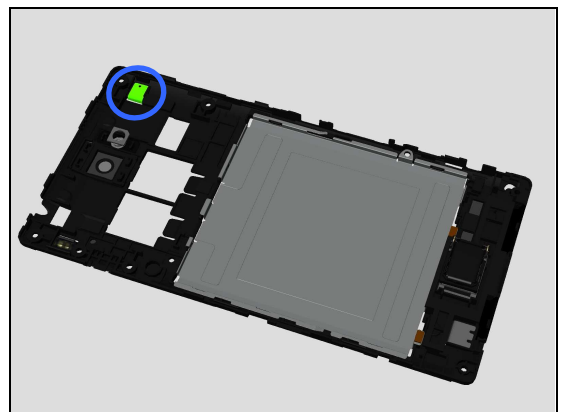
Inspect the contact pads on the Antenna BT WIFI and the contact pins on the main PBA.

Action:

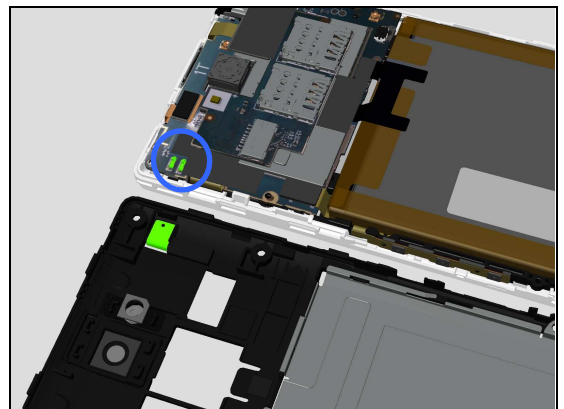
1. If dirty or oxidized – clean the pads and pins.



2. If defective or damaged – replace the Rear Cover Assy.



3. If the pins are damaged – replace Main PBA



Problem Areas

1.13 GPS

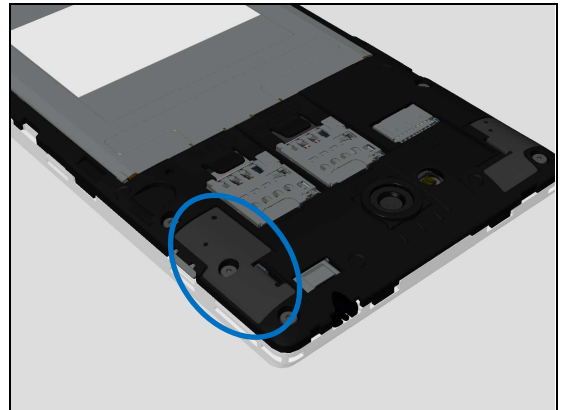
1.13.1 GPS malfunctions

Check:

Inspect the Antenna GPS on the Rear Cover Assy.

Action:

1. If dirty – clean it.

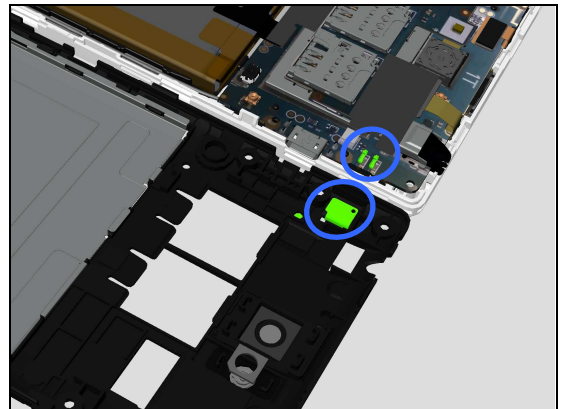


Check:

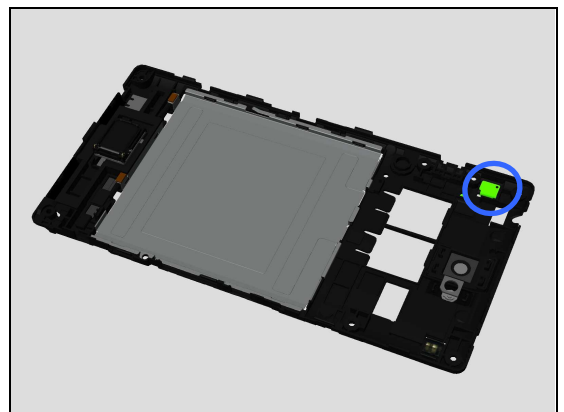
Inspect the contact pads on the Antenna BT WIFI and the contact pins on the main PBA.

Action:

1. If dirty or oxidized – clean the pads and pins.

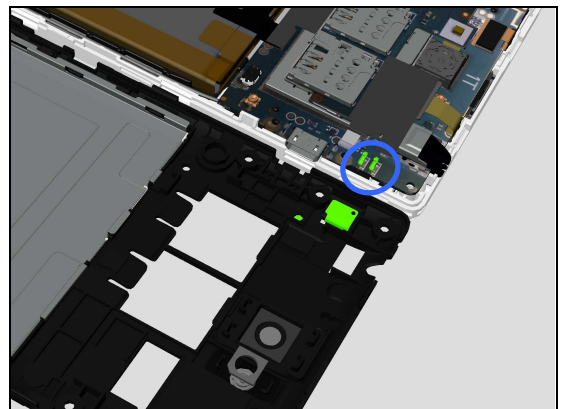


2. If defective or damaged – replace the Rear Cover Assy.



3. If the pins are damaged – replace Main PBA

Note: Calibrate the P-sensor/L-sensor 1277-0611
 Trouble Shooting Application – mechanical whenever replacing
 Front Cover LCM TP Assy or Main Board swap.



Problem Areas

1.14 Compass

1.14.1 Compass fails

Action:

Replace Main PBA.

Note: Calibrate the P-sensor/L-sensor 1277-0611

Trouble Shooting Application – mechanical whenever replacing Front Cover LCM TP Assy or Main Board swap.

Problem Areas

1.15 Accelerometer

1.15.1 Accelerometer test fails

Action:

Replace Main PBA.

Note: Calibrate the P-sensor/L-sensor 1277-0611

Trouble Shooting Application – mechanical whenever replacing Front Cover LCM TP Assy or Main Board swap.

Problem Areas

1.16 Ambient Light Sensor

1.16.1 Ambient Light Sensor

Check:

Inspect the external area of the Ambient Light Sensor window.

Action:

1. If dirty – clean it.

2. If the external window area is damaged – replace the Front Cover LCM TP Assy.

Note: Calibrate the P-sensor/L-sensor 1277-0611
Trouble Shooting Application – mechanical whenever replacing
Front Cover LCM TP Assy or Main Board swap.

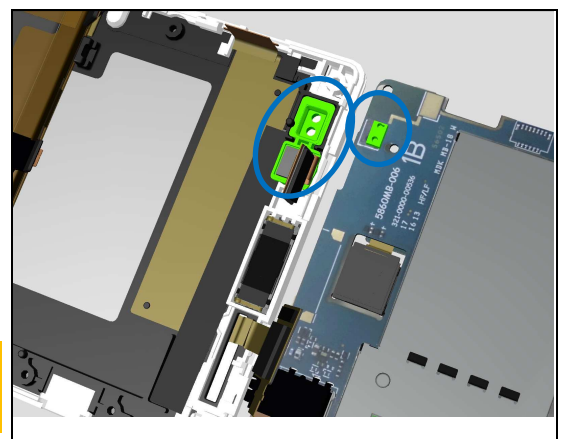
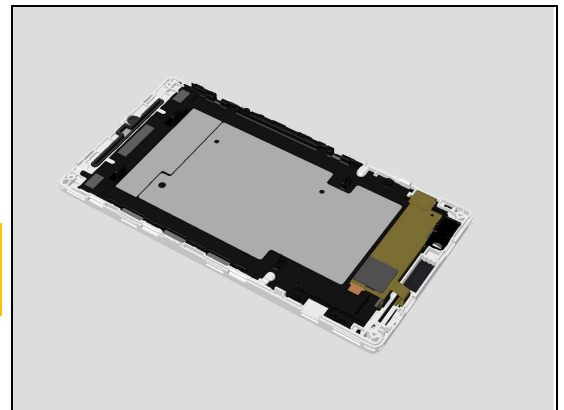
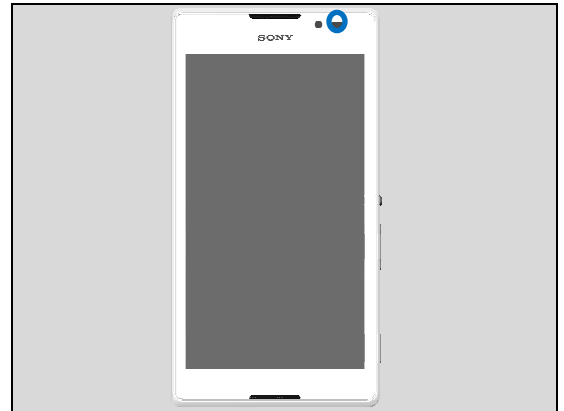
Check:

Inspect the ambient light sensor on the main PBA and the Rubber PL Sensor on the Front Cover LCM TP Assy

Action:

1. If dirty or clogged – clean them.
2. If the Rubber PL Sensor is damaged – replace Front Cover LCM TP Assy.
3. Replace Main PBA.

Note: Calibrate the P-sensor/L-sensor 1277-0611
Trouble Shooting Application – mechanical whenever replacing
Front Cover LCM TP Assy or Main Board swap.



Problem Areas

1.17 Proximity Switch

1.17.1 Proximity Switch

Check:

Inspect the external area of the proximity switch window.

Action:

1. If dirty – clean it.

2. If the external window area is damaged – replace the Front Cover LCM TP Assy.

Note: Calibrate the P-sensor/L-sensor 1277-0611
Trouble Shooting Application – mechanical whenever replacing
Front Cover LCM TP Assy or Main Board swap.

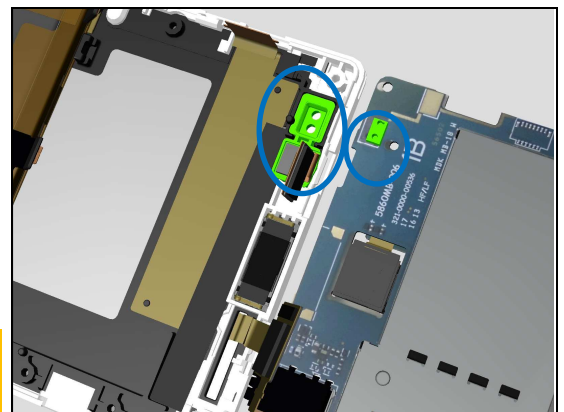
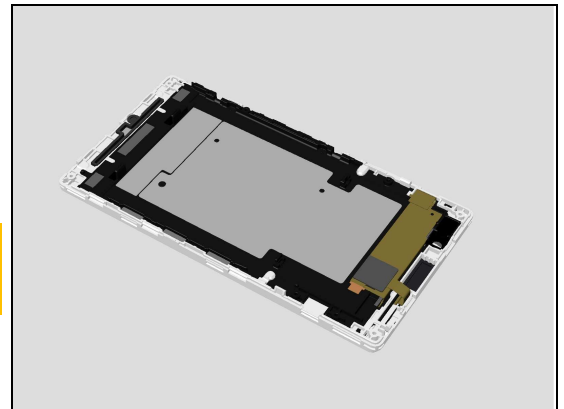
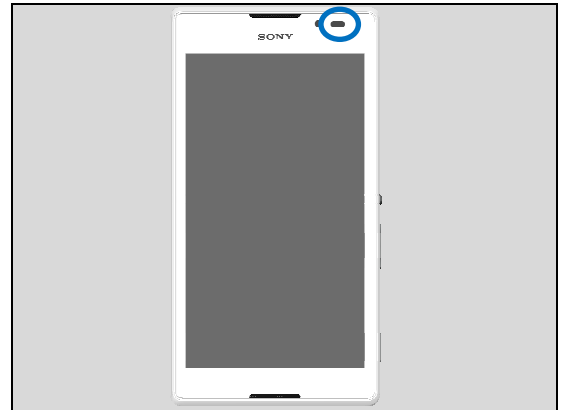
Check:

Inspect the proximity switch sensor on the main PBA and the Rubber PL Sensor on the Front Cover LCM TP Assy

Action:

1. If dirty or clogged – clean them.
2. If the Rubber PL Sensor is damaged – replace Front Cover LCM TP Assy.
3. Replace Main PBA.

Note: Calibrate the P-sensor/L-sensor 1277-0611
Trouble Shooting Application – mechanical whenever replacing
Front Cover LCM TP Assy or Main Board swap.



Problem Areas

1.18 Real Time Clock

1.18.1 Real Time Clock test fails

Action:

Replace Main PBA.

Note: Calibrate the P-sensor/L-sensor 1277-0611

Trouble Shooting Application – mechanical whenever replacing Front Cover LCM TP Assy or Main Board swap.

Problem Areas

1.19 Total call time

1.19.1 Total call time fails

Action:

Replace Main PBA.

Note: Calibrate the P-sensor/L-sensor 1277-0611

Trouble Shooting Application – mechanical whenever replacing Front Cover LCM TP Assy or Main Board swap.

Problem Areas

1.20 External Memory

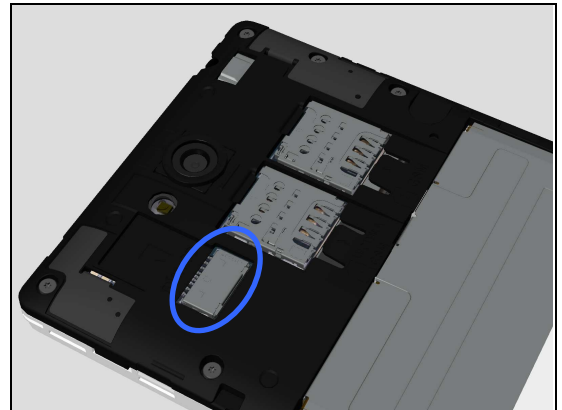
1.20.1 Memory Card not detected

Check:

Inspect the external port of the memory card holder and check if a memory card can be properly inserted.

Action:

If dirty or clogged – clean the external port.

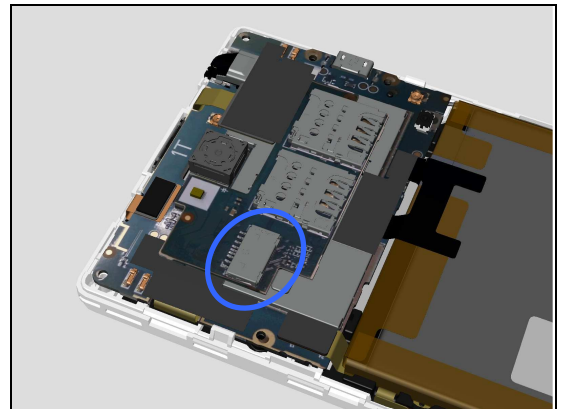


Check:

Inspect the memory card holder on Sub Board Assy.

Action:

1. If dirty or clogged – clean the holder.
2. IF the memory card holder damaged, replace the Sub Board Assy.

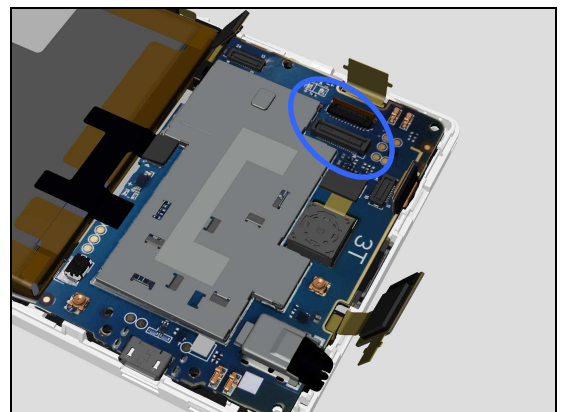


Check:

Inspect the BtB connector to Main PBA.

Action:

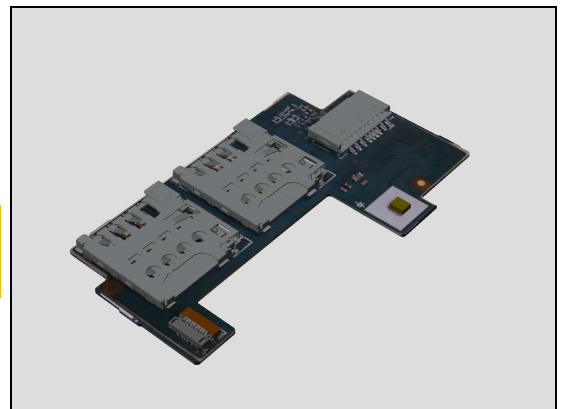
1. If dirty or clogged – clean the holder.



2. IF damaged, replace the Sub Board Assy.

3. Replace Main PBA.

Note: Calibrate the P-sensor/L-sensor 1277-0611
Trouble Shooting Application – mechanical whenever replacing
Front Cover LCM TP Assy or Main Board swap.



Problem Areas

1.21 Security

1.21.1 Security fails

Action:

Replace Main PBA.

Note: Calibrate the P-sensor/L-sensor 1277-0611

Trouble Shooting Application – mechanical whenever replacing Front Cover LCM TP Assy or Main Board swap.

Problem Areas

1.22 FM Radio

1.22.1 No/Poor FM Radio reception

Check:

Inspect the external port of the audio jack.

Action:

If dirty or oxidized – clean it.



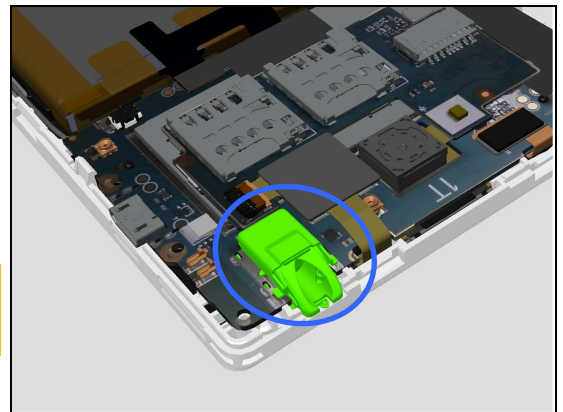
Check:

Inspect the audio jack on the main PBA.

Action:

1. If dirty or oxidized – clean it.
2. If damaged – Replace Main PBA.

Note: Calibrate the P-sensor/L-sensor 1277-0611
Trouble Shooting Application – mechanical whenever replacing
Front Cover LCM TP Assy or Main Board swap.



Problem Areas

1.23 Battery Test

1.23.1 Battery Test Fails

Check:

Inspect the BtB connectors on Main PBA.

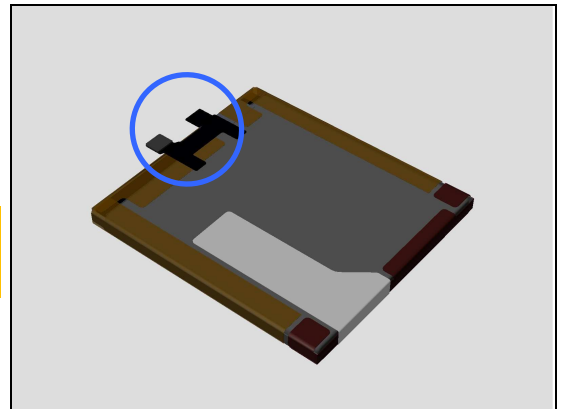
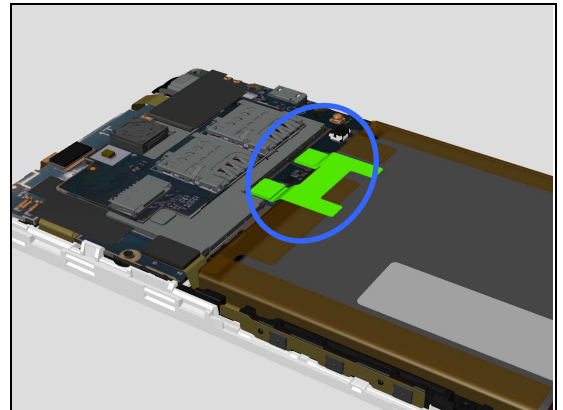
Action:

1. If not properly connected – disconnect and reconnect connector.
2. If dirty or oxidized – clean it.

2. If damaged, Replace the Battery 2330.0 mAh.

3. If Replace Main PBA.

Note: Calibrate the P-sensor/L-sensor 1277-0611
Trouble Shooting Application – mechanical whenever replacing
Front Cover LCM TP Assy or Main Board swap.



Problem Areas

1.24 Verify Certificates

1.24.1 Verify certificates fails

Action:

Replace Main PBA.

Note: Calibrate the P-sensor/L-sensor 1277-0611

Trouble Shooting Application – mechanical whenever replacing Front Cover LCM TP Assy or Main Board swap.

Problem Areas

1.25 Network & Signal

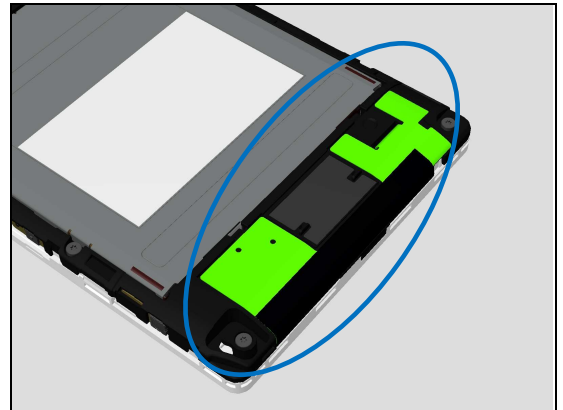
1.25.1 No/Poor signal

Check:

Inspect the Antenna Main on the Rear Cover Assy.

Action:

If dirty – clean it.

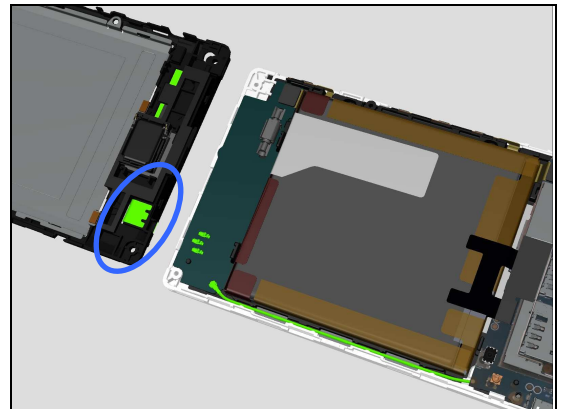


Check:

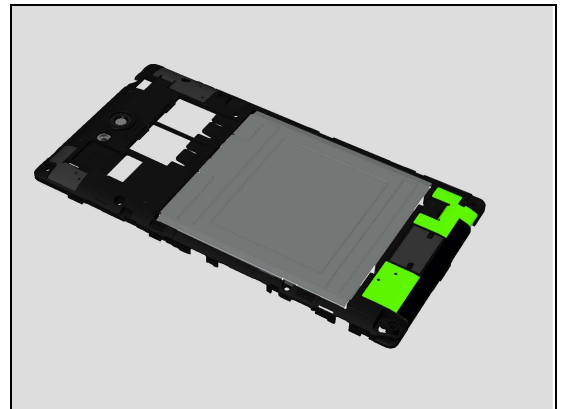
Inspect the contact pads on the Antenna Main.

Action:

1. If dirty or oxidized – clean the pads and pins.

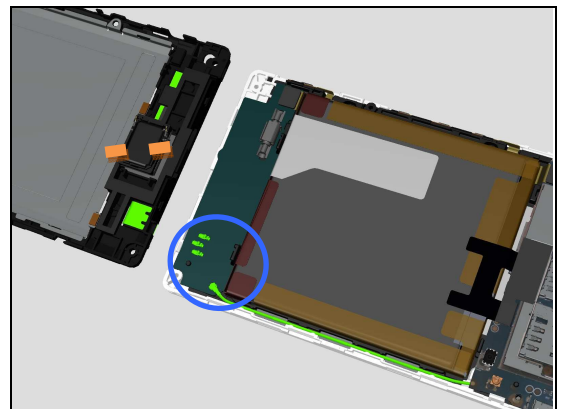


2. If damaged, replace the Rear Cover Assy.



Check:

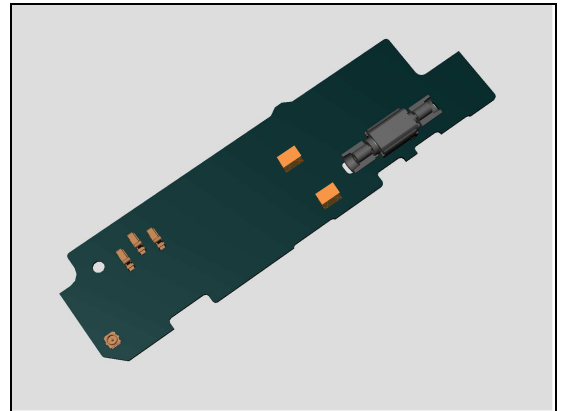
Inspect the pins and connector on Sub Board Assy.



Problem Areas

Action:

1. If the pins or the connector on the Sub Board Assy is damaged – replace the Sub Board Assy.

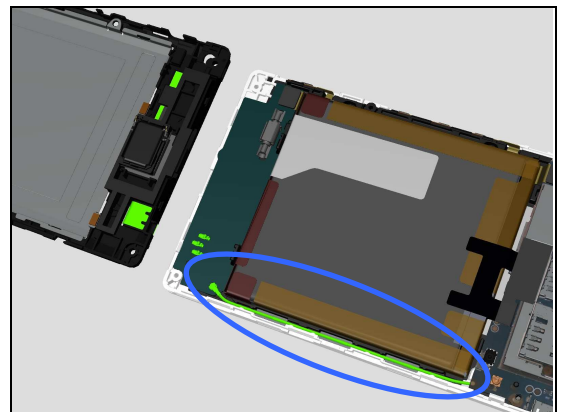


Check:

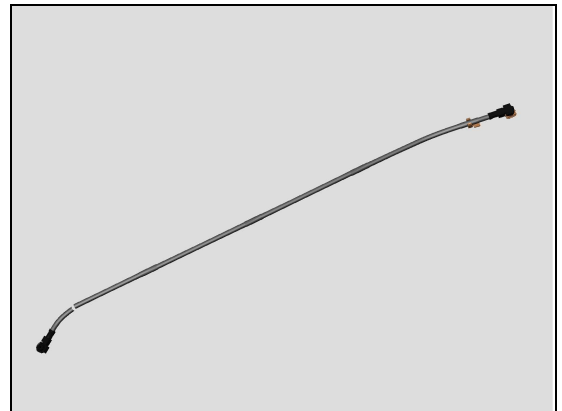
Inspect the Coaxial Cable between Sub Board Assy and Main PBA.

Action:

1. If not properly connected – disconnect and reconnect.



2. If damaged, replace the Coaxial Cable.



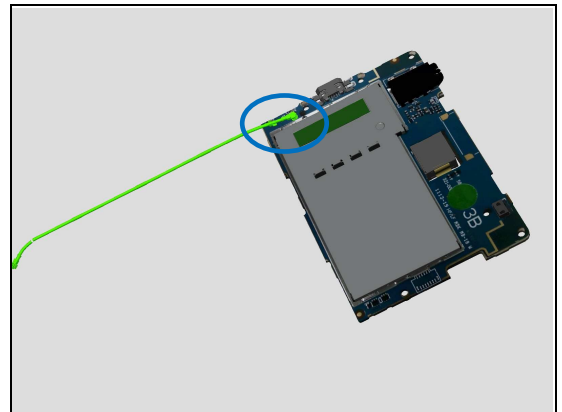
Check:

Inspect the connector on Main PBA.

Action:

1. If not properly connected – disconnect and reconnect.
2. If damaged, Replace Main PBA.

Note: Calibrate the P-sensor/L-sensor 1277-0611
Trouble Shooting Application – mechanical whenever replacing
Front Cover LCM TP Assy or Main Board swap.



Problem Areas

1.26 SIM

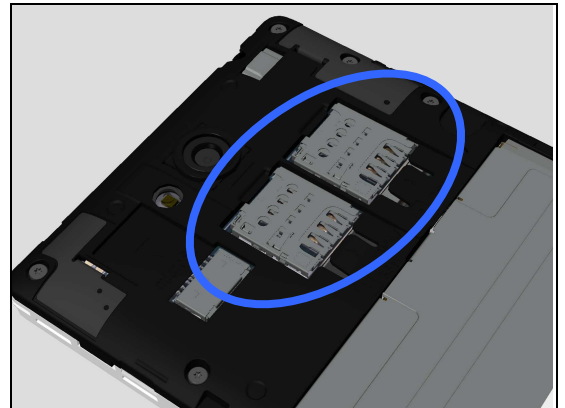
1.26.1 SIM not detected

Check:

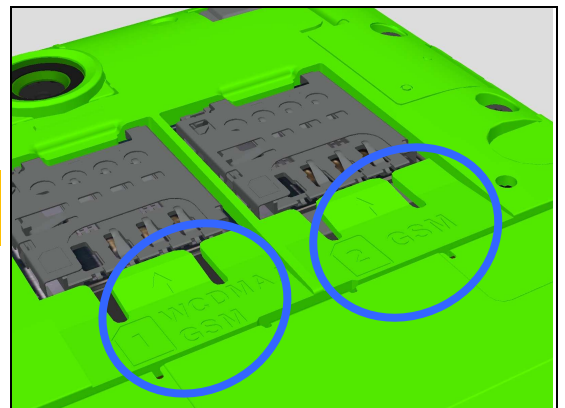
Inspect the external port of the SIM card holder and check if SIM card can be properly inserted.

Action:

If dirty or clogged – clean the external port.



Note: There's two SIM card holders:
SIM1 is for WCDMA/GSM, SIM2 is for GSM only.

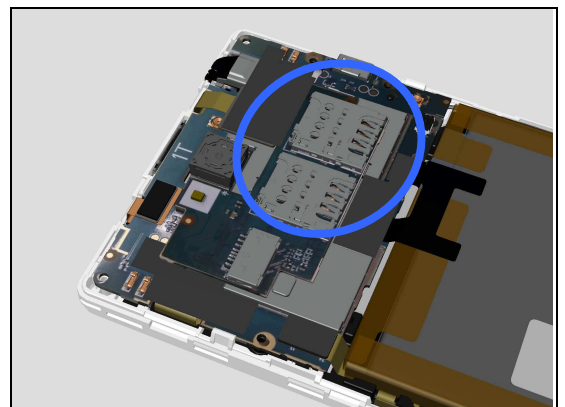


Check:

Inspect the SIM card holder on Sub Board Assy.

Action:

If dirty or clogged – clean the external port.

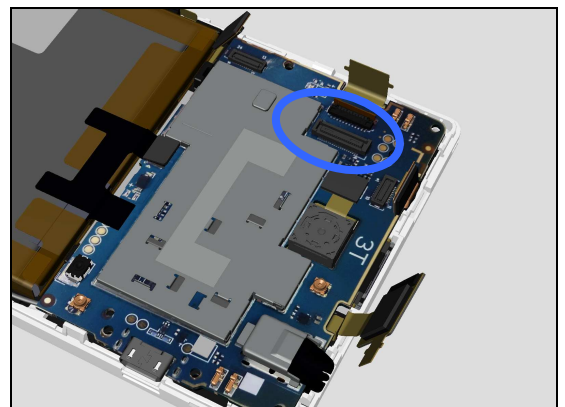


Check:

Inspect the BtB connector to Main PBA.

Action:

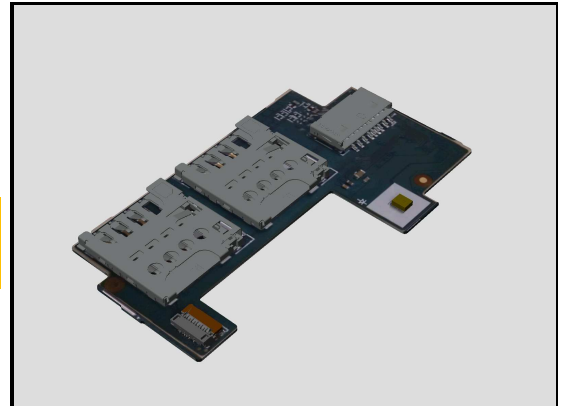
1. If dirty or clogged – clean the external port.



Problem Areas

3. If damaged, replace the Sub Board Assy.
4. Replace Main PBA.

Note: Calibrate the P-sensor/L-sensor 1277-0611
Trouble Shooting Application – mechanical whenever replacing
Front Cover LCM TP Assy or Main Board swap.



Problem Areas

1.26.2 Incorrect SIM indicated

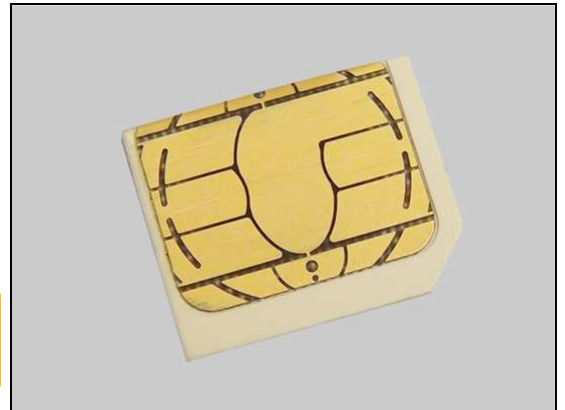
Check:

Check whether the phone is locked to a particular operator and whether the correct operator SIM is being used.

Action:

1. Use a proper operator SIM or test SIM.
2. Replace Main PBA.

Note: Calibrate the P-sensor/L-sensor 1277-0611
Trouble Shooting Application – mechanical whenever replacing
Front Cover LCM TP Assy or Main Board swap.



Problem Areas

1.27 Charging

1.27.1 Battery will not charge

Check

Inspect the USB connector.

Action:

1. If dirty or oxidized – clean the connector.

2. If damaged, Replace Main PBA.

Note: Calibrate the P-sensor/L-sensor 1277-0611
Trouble Shooting Application – mechanical whenever replacing
Front Cover LCM TP Assy or Main Board swap.

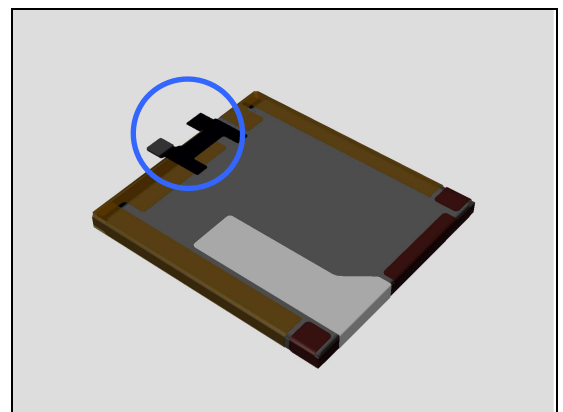
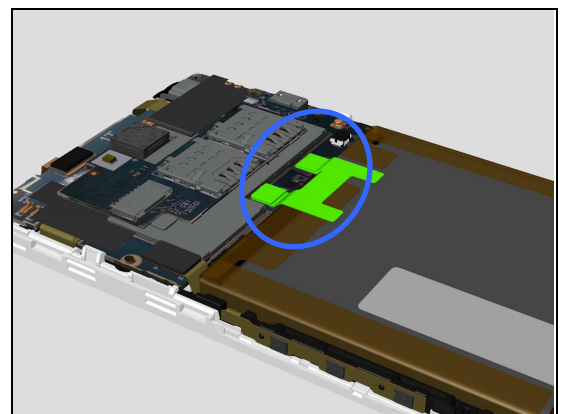
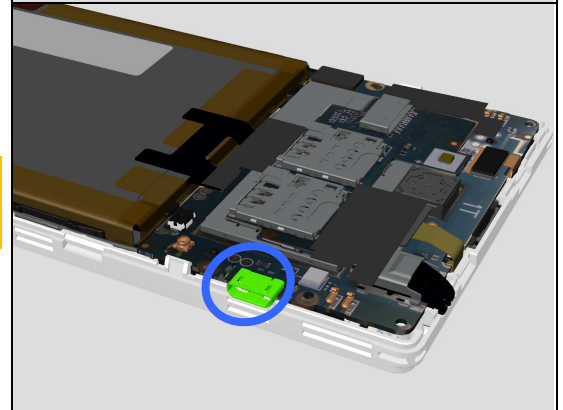
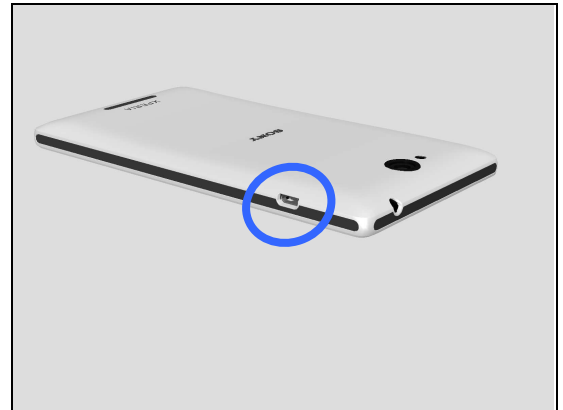
Check:

Inspect the BtB connector to Main PBA.

Action:

1. If not properly connected – disconnect and reconnect.

2. If damaged – replace Battery 2330.0 mAh.



Problem Areas

1.28 HandsFree by Wire

1.28.1 Connection to Portable HandsFree fails

Check:

Inspect the external port of the audio jack.

Action:

If dirty or oxidized – clean the connector.



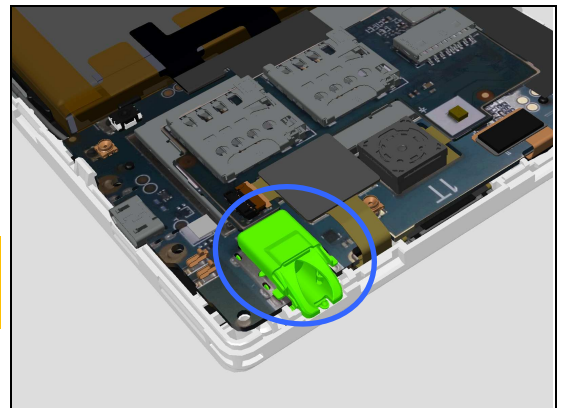
Check:

Inspect the audio jack on the main PBA.

Action:

1. If dirty or oxidized – clean it.
2. If damaged – Replace Main PBA.

Note: Calibrate the P-sensor/L-sensor 1277-0611
Trouble Shooting Application – mechanical whenever replacing
Front Cover LCM TP Assy or Main Board swap.



Problem Areas

1.29 Data Communication

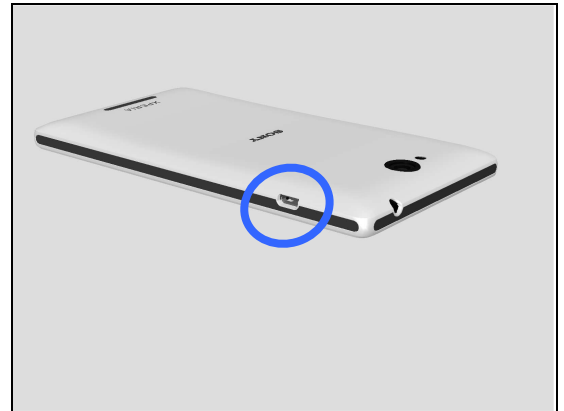
1.29.1 Data transfer via System Connector fails

Check:

Inspect the USB connector.

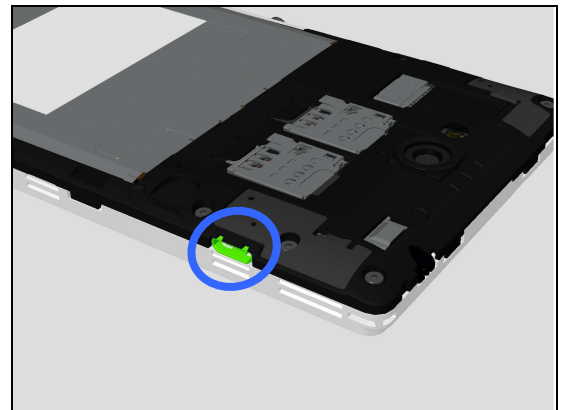
Action:

If dirty or oxidized – clean the connector.



Check:

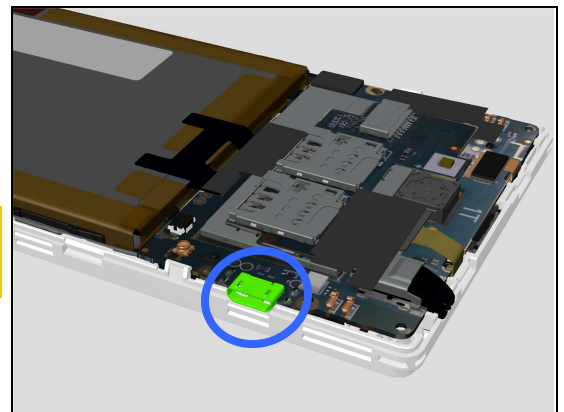
Inspect the USB connector after removing Battery Cover Assy.



Action:

1. If dirty or oxidized – clean the connector.
2. Replace Main PBA.

Note: Calibrate the P-sensor/L-sensor 1277-0611 Trouble Shooting Application – mechanical whenever replacing Front Cover LCM TP Assy or Main Board swap.



2 Revision History

Rev.	Date	Changes / Comments
1	2013-07-15	Initial release
2	2014-03-07	Update the cover page